

SOUTH FLORIDA

luxe.

interiors + design®



9.95 A SANDOW PUBLICATION 4 25



09281 03352 5

VOLUME 12, ISSUE 2 | DISPLAY UNTIL 7/16/16



INTERIOR DESIGN Carola Hinojosa, Hinojosa Design Studio
BEDROOMS 3 | BATHROOMS 5 | SQUARE FEET 4,154

BON VOYAGE

ONE COUPLE YEARNING FOR A COSMOPOLITAN LIFESTYLE AS WELL AS THE FEEL OF SETTING SAIL FINDS THE BEST OF BOTH WORLDS WITHOUT EVER LEAVING THE COMFORTS OF HOME.

WRITTEN BY LIZ ARNOLD PHOTOGRAPHY BY TROY CAMPBELL





An Atol table with a Perspex top, by Mark Brazier-Jones, was purchased from Lamberty in London as a statement piece for the foyer. The Pagani Studio light fixture from Holly Hunt offers a grid motif in bronze, quartz and mica. Polished travertine flooring from Opustone was laid in a chevron pattern to create movement.



The clients wanted a New York-style apartment," designer Carola Hinojosa says of her Miami project sky high in a waterfront condominium, "a departure from the light, white aesthetic often seen in South Florida." And so for the couple's vacation home, Hinojosa leaned toward elegant retro classics with details that add character. The other request from the owners, who love sailing and entertaining, was for the home to have the cozy feel and tight efficiency of their yacht. "It's a limited space," says Hinojosa, "but they wanted it all."

And that she accomplished. Hinojosa worked in a muted, neutral palette in the wife's preference—she loves grays and silvers—while also incorporating the husband's one request: red. A custom carpet in the great room, for example, which was sampled five times until the colors were exactly right, boasts a geometric design in many shades of gray,

Knoll stools and an Established & Sons sofa, all from Luminaire, echo the geometric lines of the fireplace surround in the family room. Arne Jacobsen's Egg chair by Fritz Hansen and Vladimir Kagan's wood sculpture are soft counterpoints. Jim Zivic's coal coffee table from Ralph Pucci and a custom V'Soske rug add interest.

Photo: Robert Taylor
 Styling: Holly Hill
 Furniture: Luminaire
 Knoll stools and an Established & Sons sofa, all from Luminaire, echo the geometric lines of the fireplace surround in the family room. Arne Jacobsen's Egg chair by Fritz Hansen and Vladimir Kagan's wood sculpture are soft counterpoints. Jim Zivic's coal coffee table from Ralph Pucci and a custom V'Soske rug add interest.



CONTINUED FROM PAGE 287

plus dashes of rich aubergine. The oversize carpet unifies the living and family rooms, pulling together the custom gray sofa, a daybed upholstered in red cashmere, and a pair of bronze chairs covered in a graphic black-and-white print. "The grand living room, which incorporates the entire social area, has a very Art Deco influence," Hinojosa explains. "You can see that the textured rug was designed with stylized geometric forms like other elements in the room." Metallic pieces—a bronze-and-slate low table, an armchair with a shapely gilded frame, and, elevated on a white pedestal, a significant bronze sculpture by Manolo Valdés—not only mix up textures, but also add a dose of glam like that of fine jewelry.

In the kitchen, graphic statements continue in contrasting white-lacquer and Macassar ebony cabinetry, which are integrated with Miele appliances—all from Eggersmann USA. Crisp white quartz countertops were fabricated by Inter-Marble and Granite.



Alison Berger's light fixture from Holly Hunt suspends over two wood tables with glass bases and a dividing screen, both conceived by designer Carola Hinojosa and made by builder and craftsman Jerry Rowland. The chairs are by Christian Liaigre.



CONTINUED FROM PAGE 289

Similarly, the adjacent family room, which was designed to integrate the fireplace as a focal point, employs a mix of textures to add interest to the monochromatic palette of grays. The rough-hewn coffee table, for example, was carved from anthracite coal.

Continuity is another element that Hinojosa brought to the home. The geometric motif of the great room's rug echoes in the borders of the draperies, as well in the dining room, where a bronze screen door with gray-mirrored glass features a dramatic pattern and serves to divide the large room for smaller gatherings. "When it's open," says Hinojosa, "it can seat up to 24 people." Red pops up again here, as striking stitching on the backs of the dining chairs.

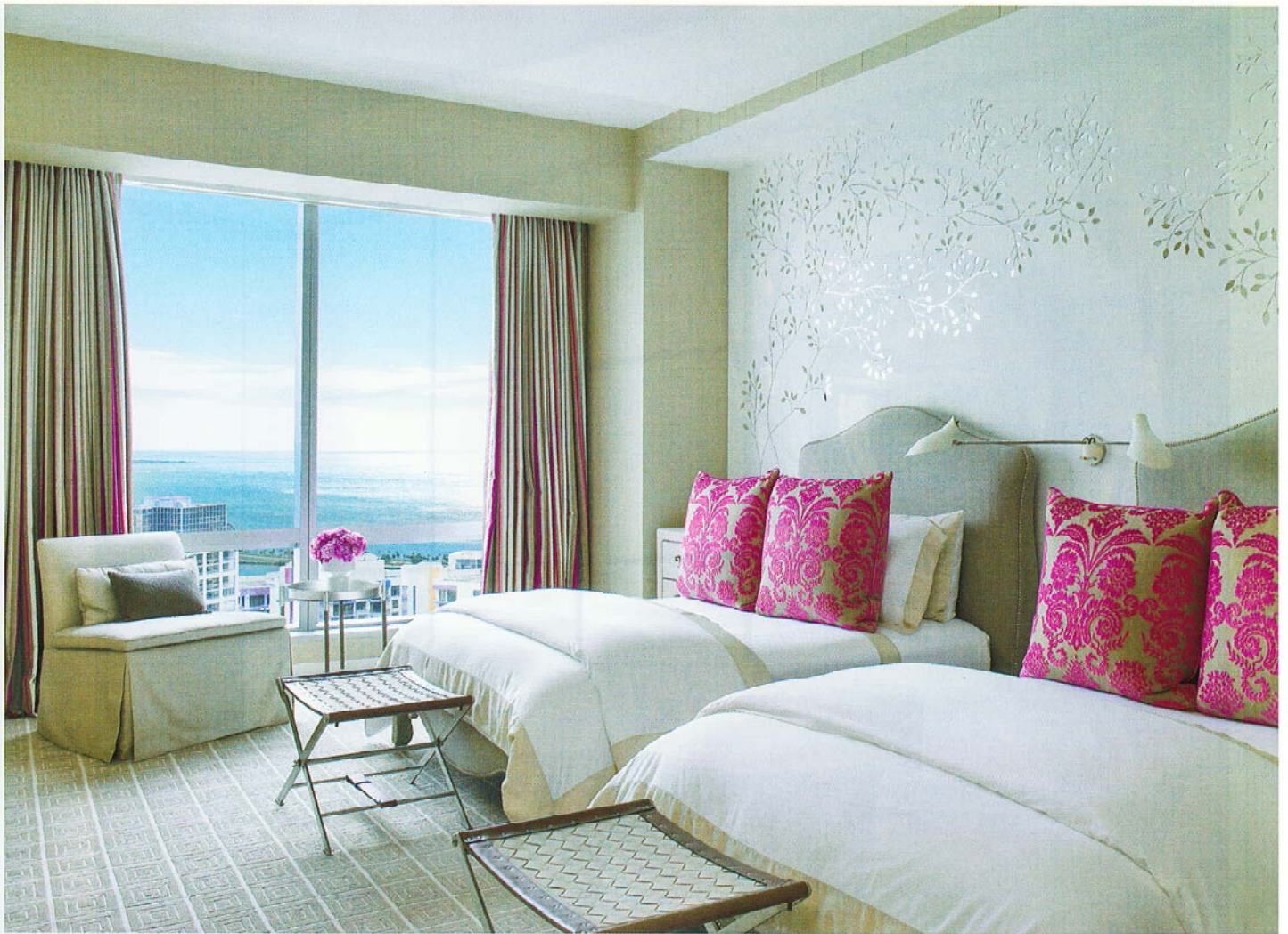
Cast-bronze chairs by Paul Mathieu, from Ralph Pucci, add sinuous curves to the geometric living room, which features a Kevin Walz daybed covered in red Loro Piana cashmere, another peek at the custom V'Soske rug and a bronze-and-slate table by Eric Schmitt, also purchased at Ralph Pucci.



A stratified-glass table by Carlo Santambrogio, purchased at Luminaire, was chosen for the bar at the window in the living space; its transparency doesn't obstruct views, and its hardware sparkles with glamour. The bar chairs, by Walter Knoll, and the Ross Lovegrove suspension lighting are also from Luminaire.



A freestanding Victoria + Albert tub in the master bath rests on stone from Inter-Marble and Granite and provides a front row seat to Biscayne Bay views. Waiting nearby and brimming with towels is a white leather basket by 100% Capri.



CONTINUED FROM PAGE 290

Hinojosa designed the millwork throughout to conceal storage, including the foyer paneling, the living room's white-lacquer built-ins, and the leather-and-bronze cabinetry around the family room's fireplace, all fabricated by builder and craftsman Jerry Rowland of Handcraft Construction Management, who oversaw all construction.

Subtle variations in tonality of materials express their own organic movement and beauty, as though they are celebrating their authenticity. The entry's polished travertine flooring in a chevron design nods to the marble in the master bath, and Venetian plaster walls in the foyer are a tactile organic surface that references the goatskin-parchment tiles in the master bedroom.

In the children's room, John Hutton beds from David Sutherland with E. Braun & Co. bedding each feature a Bottega Veneta stool at the foot to mix shape and texture, while touches of fuchsia on the pillows and draperies—both Designers Guild from Ammon Hickson—add color. The chair is by Maxine Snider, also from David Sutherland.



A Troscan Design + Furnishings bed from Holly Hunt centers the master bedroom, which is paneled in parchment and carpeted by Stark. Softness continues on the lambskin-covered bench, from the Paul M. Jones Collection for John Boone, found at David Sutherland. The Hervé Van der Straeten mirror is from Maison Gerard.



CONTINUED FROM PAGE 293

The master bedroom is one particular area that is especially precise in its yacht-like execution of unwasted space. "The moment my clients mentioned that they wanted to have the feel of a yacht in their new condo, I immediately thought of Jean-Michel Frank and his understated luxury," Hinojosa says. As an homage to Frank's use of vellum-sheathed walls, the goatskin tiles ingeniously panel the bedroom walls in a grid pattern, concealing closets, storage and even a television. "Each tile was individually selected for coloration and then wrapped and numbered," says the designer. "It was like a big puzzle." Sea-inspired accents in shades of aqua and oyster give the room added warmth.

With the designer having accompanied the clients to exclusive fairs around the globe to source one-of-a-kind pieces, it is no surprise the space radiates an unusual sophistication. As a result, the residence, with an unobstructed captain's view of Biscayne Bay, also possesses something of a worldly voyage. **L**